



Perimeter Intrusion Detection System

Highly customizable AI based solutions to meet client's specific requirements

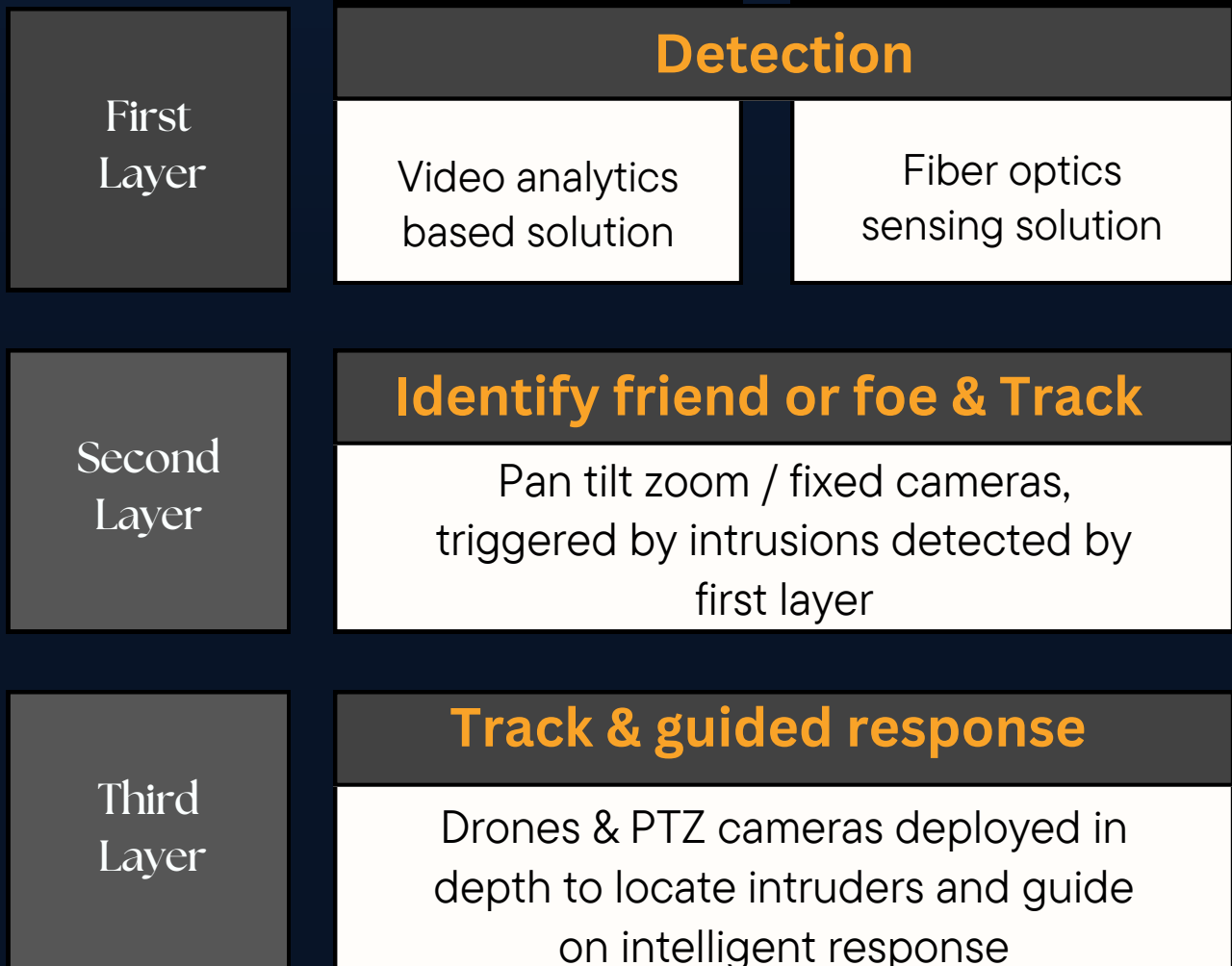
■ Prevent, detect & respond

Three layered PIDS, comprising Fiber optics sensing solution and AI programmed video analytics not only detects and prevents a breach, but also helps locate intruders and respond intelligently.

Proactive & predictive response to thwart a breaches before it has been attempted



Architecture



■ A multi-layered detection system



Video Analytics Based Solution



Integrates with existing infrastructure

■ Detection & Identification

Smart cameras installed along the perimeter detects movement within a specified distance from the fence

Can detect before intruder breaches perimeter

Identifies armed intrusion/ weapons/ tools / machinery / theft / stolen items / bags etc

Identifies insiders, employees, workers

■ Centrally monitored

Feed centrally monitored at Command Centre

Any breach auto triggers, cameras at the second layer

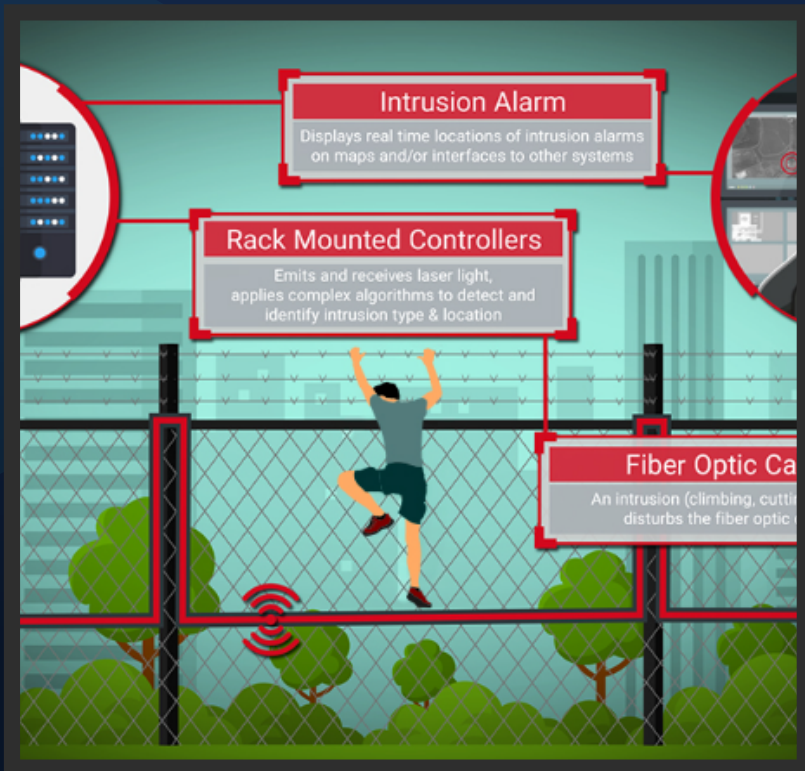
Alarm raised to alert security staff

Intervention parameters programmed onto the cameras

Seamless integration with hooters / flood lights / all cameras



Fiber Optics Sensing Solution



Integrates with existing infrastructure

Detection

Advantages: -

- Passive in nature, no power required across the site except at Command Centre
- Immunity to electromagnetic interference
- Easy to repair

How it works

Optical fiber is the sensor element, giving it distributed sensing properties

Signals processed using smart algorithms



Seamless integration with hooters / flood lights / all cameras

Main device sends optical signals and receives it back with changes induced due to intrusions



Intrusion alarms and warnings auto generated on breach



Climbing



Digging



Tampering

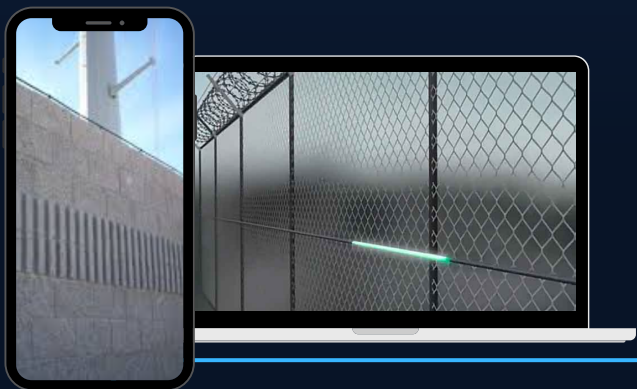
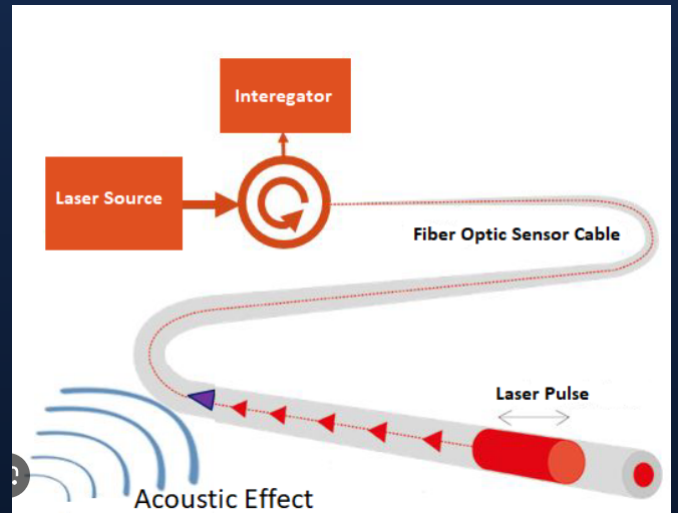


Fiber Optics Features

Passive

- No electrical power required to outdoor components
- Zone based system
- Distributed acoustic sensing
- Real time alert and warning

Intelligent software control of device and zones identifies noises like rain, wind, hail and eradicates false alarms

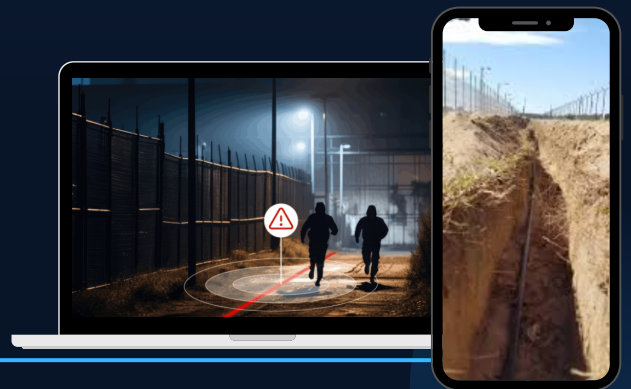


Overground deployment

- Concentrated majorly on already available physical barriers like walls & fences
- Fences like iron wire net, metal wire net, barbed design are chosen for overground fence application
- For walls, deployment done on surface and top

Detects

Climbing / fence / wall / post
Use step ladder / digging tunnel
Disassembling / tearing / lifting / cutting fiber / fence



Underground deployment

- Vibration and pressure changes are primary mode of stimuli
- Difficult to detect and avoid hence extremely effective
- Soil may be modified by adding concrete mixture wherever necessary

Detects

Digging & tunneling
Running / walking
Vehicle passing
Tree cutting

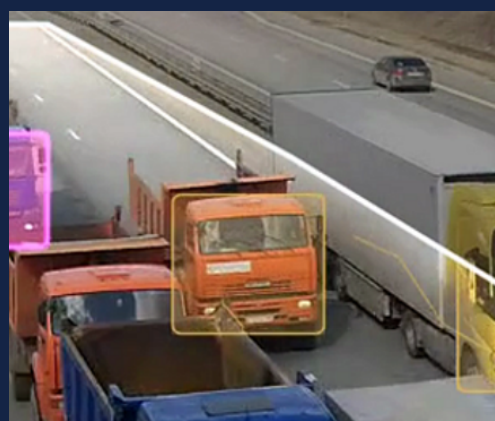


Other Customizable Solutions



CUSTOMIZED PARAMETERS

AI monitoring and enforcement of rules & norms by defining parameters such as no picking up things from ground, eating outside the canteen, entry restrictions in prohibited areas, logging operation timing of equipment, audit helmets and PPE



LOADING / UNLOADING

Checks loading-unloading is not taking much time and all the safe operating instructions and procedures are followed

VEHICLE ANALYSIS

Alerts raised for blacklisted vehicles. Tracks whether trucks loaded. Scans license plates and seamlessly incorporates into operational procedures

Merging Proficiency with Technology

Redefining the Security
Experience

WE PROMISE PEACE OF MIND



CONTACT US



Phone:

+91-9310116102,
+91-9957983674



email:

info@greyvolk.com



Address:

II-103, IITL NIMBUS, Express Park
View II, Chi V, Greater Noida

Website:

www.greyvolk.com



**The pioneers of
Remote Security in India**